

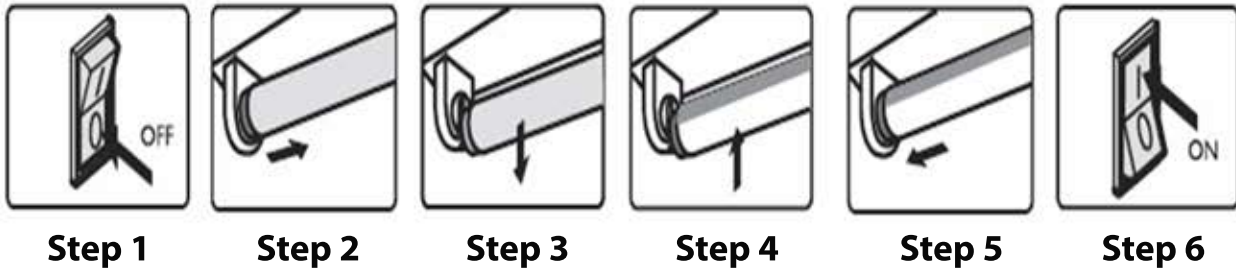


Installation Instructions

High Efficiency T5 Direct Replacement LED Tubes (Type A)

This product is a direct replacement LED tube that works with an existing fluorescent fixture ballast. The product is intended to work with instant start electronic ballasts. Please make sure fixture has a compatible ballast (see ballast compatibility list).

Installation Guide



Instructions

- 1) Switch of power to luminaire
- 2) Remove Lens / Diffuser (if one exists)
- 3) Remove existing fluorescent lamps from luminaire
- 4) Install LED lamps into luminaire
- 5) Put Lens / Diffuser back
- 6) Switch on power to luminaire

Cautions

If the lamp or luminaire exhibits undesirable operation (Buzzing, Flickering immediately turn off power, remove lamp from luminaire and contact the manufacturer.

Not intended for use in emergency exit fixtures or emergency exit lights.

Suitable for damp locations

Lamps must be operated within ambient fixture temperature -22 to 113 F or -30 to 45 C.